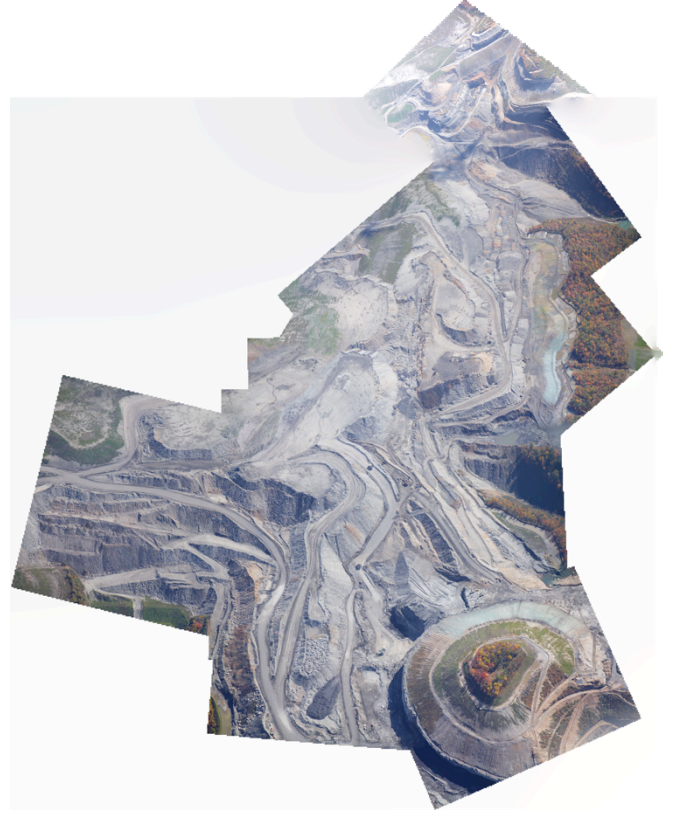


Jarrells Cemetery, N37°53.96'
W81°34.71'. Eunice Mountain. West
Virginia. 2012. Inkjet. Site-specific
wallpaper 400x400 cm



Surface mining operations typically owns the mineral right of a land. It means there is a separation of owning land for commercial purposes. There is the land you stand on and then everything under the ground. Some else can own that and the owner of those rights can come back and dig up the lot or drill when they know there are minerals to be found. There are some exceptions to dig up someone's property, one is a when they encounter a cemetery. This wallpaper shows a cemetery, which looks like a pyramid. The image itself is rendered and merges by an algorithm in Photoshop, a somehow random order which creates a representation of a landscape. The images are distort to make the lines fit. Similar technology used by Google, or the military to survey and map landscape today.